

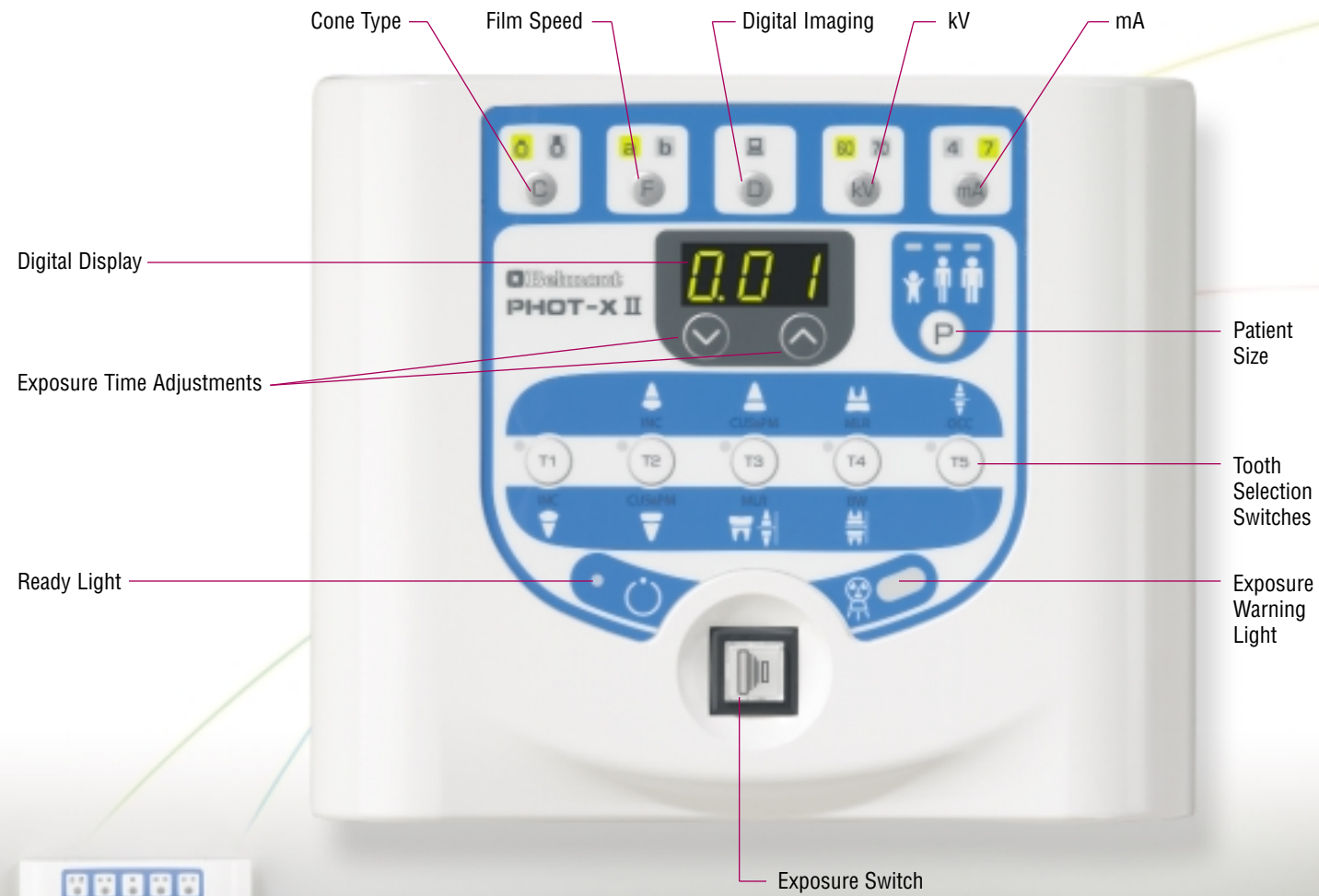
 Belmont®



PHOT-X II

PHOT-X II

Intra-oral X-ray System

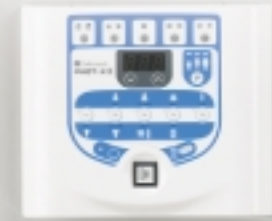


■ Control module shown with optional coiled wire switch for remote activation

- Constant potential DC X-ray system reduces patient radiation exposure
- Crisp digital or film radiographic imaging
- 60 or 70 kV settings for optimization of diagnostic imaging techniques
- Easy to use, intuitive controls
- Lightweight X-ray head is easily positioned
- Wall mount, Cabinet mount or optional Pass-Thru mount

■ Lightweight, ergonomically contoured X-ray head is easily positioned

■ A standard cone is provided with each X-ray system. Optional long or rectangular cones are available.



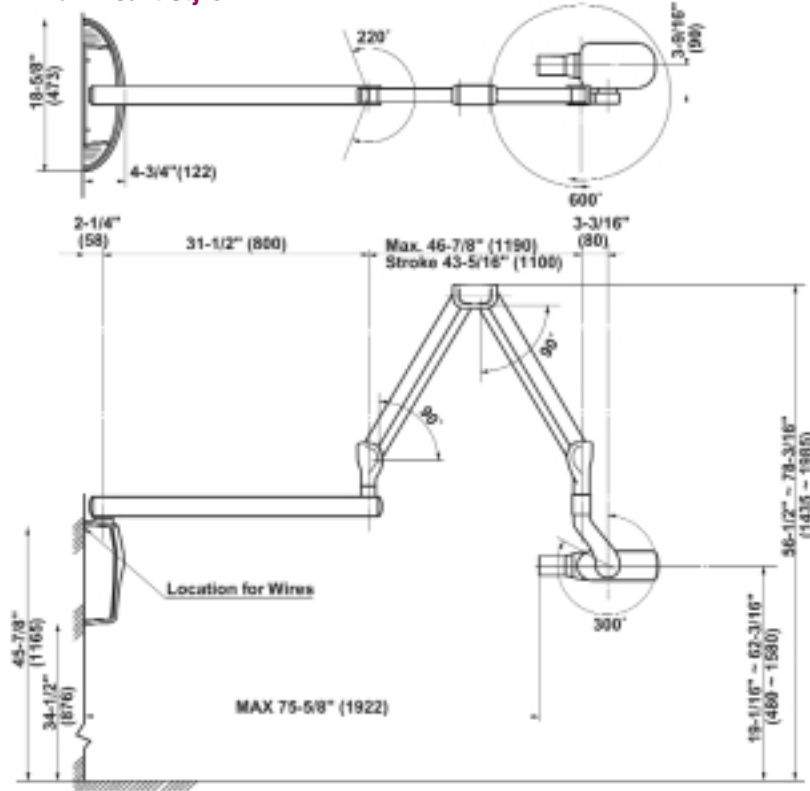
PHOT-X II

Intra-oral X-ray System

Dimensions:

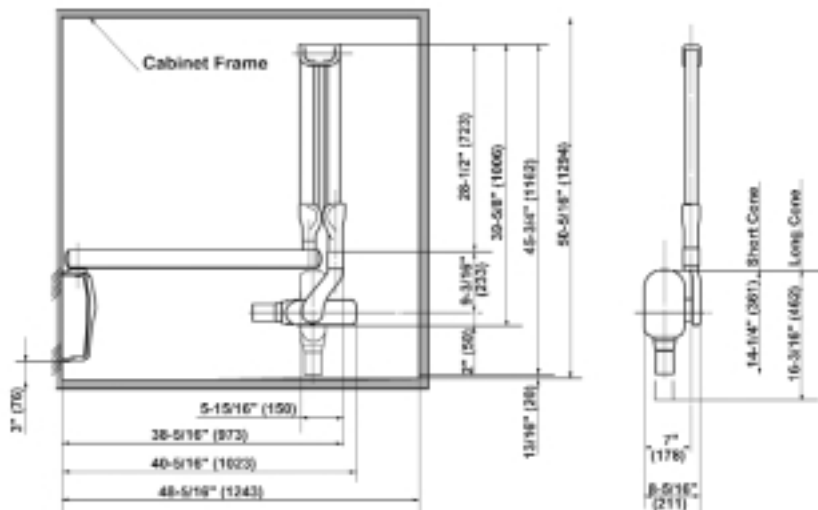
Wall Mount Style

()=mm



Pass-Thru Mount Style

()=mm



Specifications:

Constant Potential DC X-ray Generator

60kV/70kV -Selectable

4mA/7mA -Selectable

0.7mm Focal Spot

Line Voltage Range: 108-132 VAC

Rated Line Current: 10.8 A @ 70 kV, 7 mA

Exposure Time: 0.01-3.2 seconds

Minimum Filtration in useful beam:
2.0 mm Al equivalent at 70kV

Control Module:

7-1/4" x 6-1/8" x 1-5/16"

Source to Skin Distance (SSD):

Standard Cone: 203mm

Optional Long Cone: 305mm

Optional Rectangular Cone: 203mm

Maximum Reach:

with standard 31.5" Arm: 75-5/8"

with optional 20" Arm: 64-1/8"

with optional 12" Arm: 56-1/8"

Additional Options:

Plate for 4x4 stud mounting

Coiled wire remote switch

2 Year Limited Warranty

Belmont®

Belmont Equipment
A Division of Takara Belmont USA, Inc.
101 Belmont Drive, Somerset, NJ 08873
(732) 469- 5000

1-800-223-1192
www.belmontequip.com